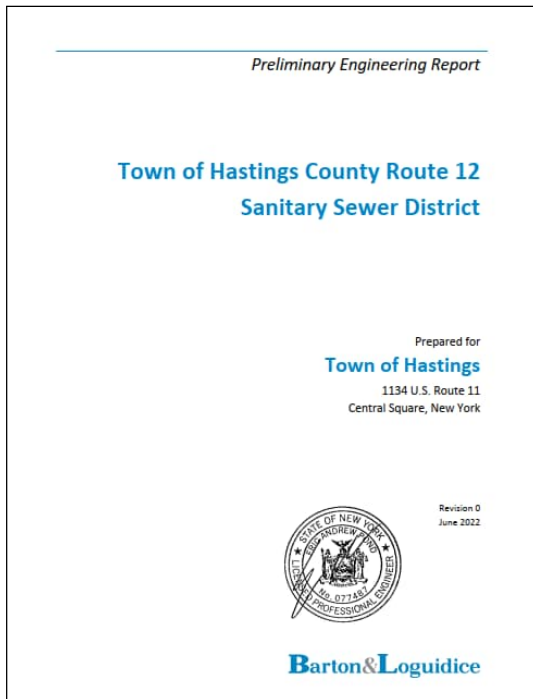
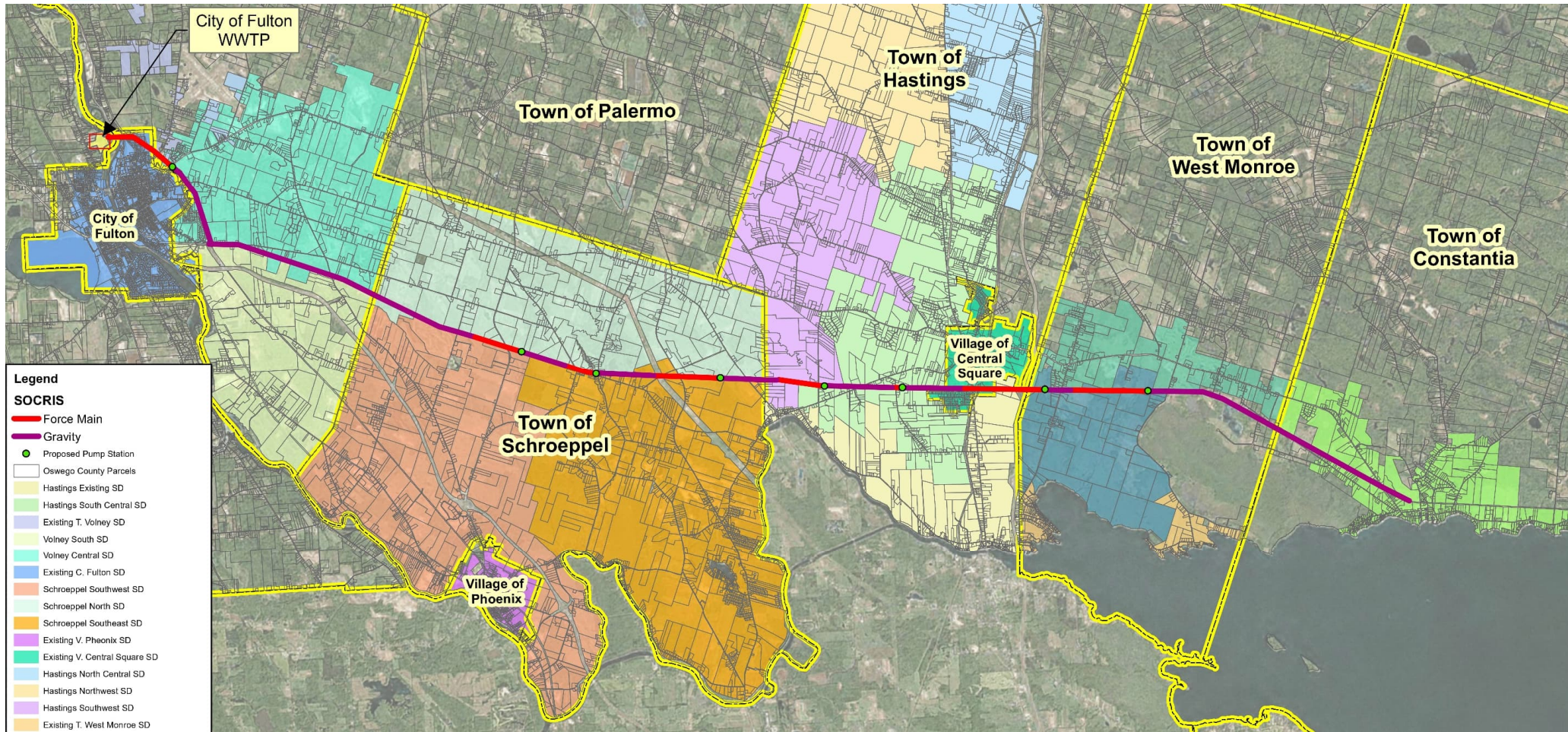


Southern Oswego County Regional Interceptor Sewer (SOCRIS)

HISTORY OF PROJECT



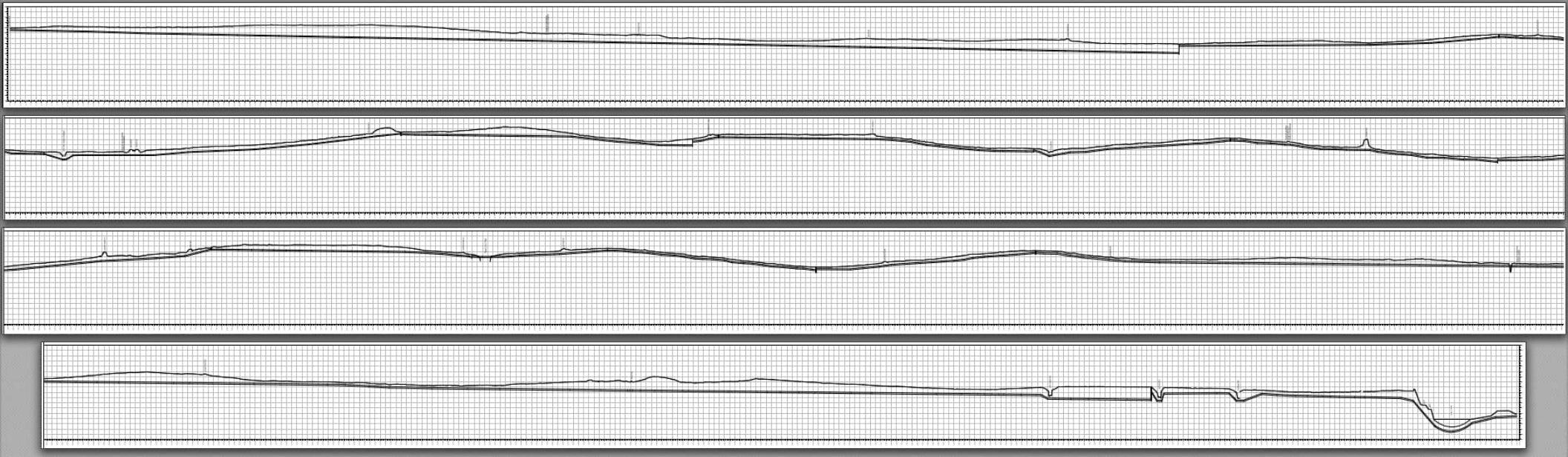
- (T) Hastings started study at Town level to expand sewer and existing WWTP in 2022
- B&L coordinated with Hastings, Fulton and Oswego County about a county-owned line to Fulton along county rail trail
- Hastings authorized amended PER in 2024 with alternative to go to SOCRIS for 2025 grant applications
- Schroepfel authorizes development of a PER in 2024 with alternative to go to SOCRIS for 2025 grant applications
- Constantia becomes aware of concept wants to proceed with alternative with alternative to go to SOCRIS for 2025 grant applications
- Oswego County supporting 2025 SOCRIS PER submission

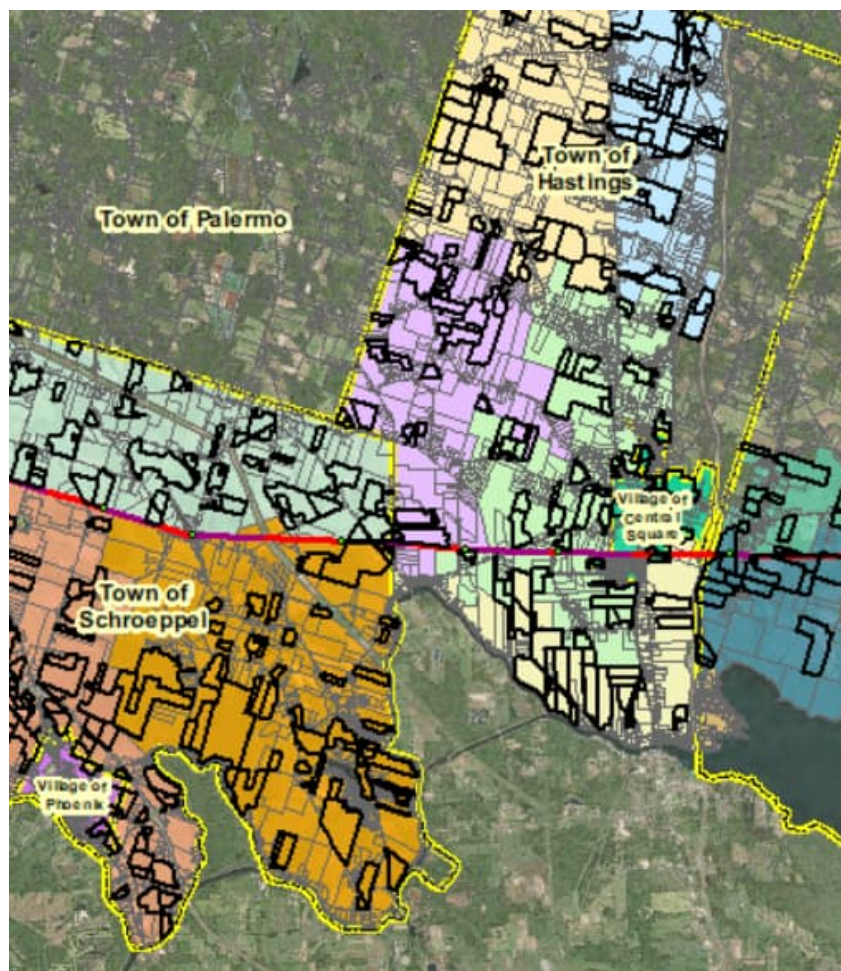


Infrastructure

- ~15.4 miles of gravity sewer
- ~7 miles of force main
- Approximately 8 pump stations across 22.4 miles
- Sized for long term regional growth with immediate reduced usage
- Users will connect at main SOCRIS pump station or a gravity section of interceptor

Size	Gravity (LF)	Size	Force Main (LF)
18"	22000	18"	6500
18"	2050	18"	6850
24"	5600	24"	500
24"	6100	24"	3700
24"	5100	24"	5300
24"	5000	24"	2600
24"	4000	24"	4200
27"	31300	27"	7100
81150 LF		36750 LF	
15.4 Miles		7.0 Miles	
22.4 total miles			
117900 total feet			





Future Development

- Vacant properties in the surrounding area have been evaluated on a basis of how likely they are to be developed in the future. This data will be used to project future flows.
- Property attributes being looked at are:
 - size of property
 - property class
 - zoning
 - ag district
 - wetlands
 - distance to Micron
 - distance to closest main road
 - availability of public water

City of Fulton WPCP



- Monthly average flow rating of 3.4 MGD
- Peak flow capacity rating of 13.0 MGD
- Originally sized for local industry which has since vacated
- Significant excess capacity for outside waste acceptance
- Capital improvements project to begin spring 2025

Main Treatment Processes

- Mechanical Bar Screen and Grit Removal
- Primary Clarification
- Trickling Filters
- Secondary Clarification
- Gaseous Chlorine Disinfection



City of Fulton WPCP Excess Capacity

- Influent Flow Characteristics
 - Average Month: 1.8 MGD
 - Average Dry Month: 1.1 MGD
 - Max Month: 3.0 MGD
 - Monthly Average Rating: 3.4 MGD
- Influent Loading Characteristics
 - Average BOD loading: 3,539 PPD
 - Trickling Filter BOD capacity: 7,700 PPD
- WWTP is only 1/3 utilized with base sanitary flow
- NY-2A completed in 2023, revised permit issued in 2024
- City WPCP has capacity for another 10,000 people!



Implementation

- County entity operates and maintains main interceptor
- Provides surrounding communities with the opportunity to connect
- County coordinates treatment charges with City of Fulton to be levied to those that are connected
- County deals directly with each community regarding transmission charge and treatment charge passed along from Fulton





BIPARTISAN INFRASTRUCTURE LAW



Funding

- “In-the-box” funding opportunities include:
 - BIL (50% grant up to \$25 mil)
 - Enhanced WIIA (50% grant up to \$25 mil)
 - WQIP (25% up to \$10 mil)
- Other funding opportunities???

**Barton
&Loguidice**

| The Experience to **Listen**.
| The Power to **Solve**.

Questions?